

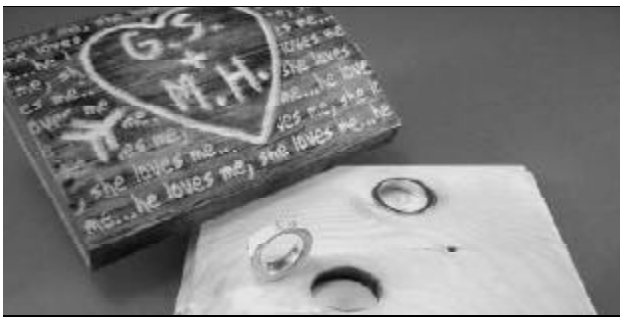


# METALURGE

a metalarts company



## LOVE, PROMISE, FAITH: Artists Re-Image the Ring June 24 - August 1, 2004



Gillian E. Batcher • Matthieu Cheminée • Klay Covert • Karin Domnick • Shoshana Farber • Mary Frances Jung • Lucie Lambert • Ron Maunder • Mary K McIntyre • Shona Rae • Cynthia Ryder • Greg Sims • Ashley Thompson • Erin Tracey • Sarah Troper • Annette Van-Leeuwen • Andrea Wenckebach



# LOVE, PROMISE, FAITH: Artists Re-Image the Ring

**METALURGE**  
a Metalarts Company

June 24 - August 1, 2004

1225 Yonge Street Toronto  
ON Canada M4T 1W4

P 416.323.0047 F 416.323.1425  
E [metalurge@metalurge.ca](mailto:metalurge@metalurge.ca)  
online: [www.metalurge.ca](http://www.metalurge.ca)

# Introduction

When Carol Slavik founded METALURGE, she made a commitment to create an environment for metal artists to showcase their creativity. In 2004, Slavik introduced *Love, Promise, Faith: Artists Re-Image the Ring* as a thematic exhibition challenging metal artists “to celebrate the diversity of contemporary relationships through the ultimate symbol of love, devotion and commitment” with rings intended for engagement, commitment or marriage.

Donald Stuart, Professor Emeritus, Founder of the Jewellery and Metals Programs, Georgian College; and Ken Vickerson, professional goldsmith and Associate Professor, Ontario College of Art and Design, agreed to jury the competition. It was fascinating listening to them discuss important qualities that the rings should possess, from aesthetics, which embody concepts of unity and durability,

to the issue of everyday wear practicality. The eclectic variety of design reflects the vibrant community of metal artists who balance these concerns in their creations. Interestingly, a number of the rings display a distinctively Canadian bias in their representations evoking images of nature and industry, with references to silver birch bark, knotholes and picket fences.

Five prizes have been awarded in this competition in five categories: Imperial Smelting & Refining Best In Show Award, Pizza Pizza Student Award, Handy and Harman Emerging Artist Award, Kitco Award for Innovation, and the METALURGE Award. I would like to thank the sponsors for their generosity and encouragement to the artists.

To the winners: Matthieu Cheminée, Ashley Thompson, Sarah Troper, Mary McIntyre and Greg Sims, I extend my congratulations for your beautiful work, which is individualistic, innovative, well executed and graceful.

Ann Douglas, Curator

# Judges' Statement

This exhibition presented participants with a unique opportunity to revisit and revamp a popular theme. The history of the wedding ring is long, rich and varied. The call for entry suggested that as our ideas of the composition of the family unit changes and broadens, so too should the symbols of these unions, with inclusion the intent. The entries responded to this theme with wit, charm and thoughtful reflection on what it means to make a commitment of the heart.

It is always a pleasure to jury a show. It gives us the opportunity to carefully look at the pieces - front, back and inside out - to see how meticulous the artist has been. For a juried show, good craftsmanship is an absolute, and happily, the entries to this show do not disappoint. The pieces were also viewed according to other criteria such as: practicality, survivability, symbolism, interactivity, significance, innovation and response to the theme. Because the show has a theme, another exciting dimension is added, that challenges the designers to express themselves in a way that perhaps they had not thought of.

This exhibition offers a tantalizing approach to rings. Some participants really took this as a challenge and the results speak volumes. A couple of entries accepted the call using drawings/renderings, rather than finished rings. It is surprising that more did not approach it in this way. There are a few, perhaps more timid, approaches to the theme, but they are intriguing nonetheless. The artists' statements assisted us to understand more completely the varied approaches.

The award winners certainly excel for a number of reasons. The entry of Student Award winner, Ashley Thompson, speaks of the privacy of an intimate relationship, with its hidden reminder of your paramour, a secret to cherish. Sarah Troper, winner of the Handy and Harman Emerging Artist award, reinterprets a North American ideal with her white **Picket Fence** rings: charming, nostalgic and finely crafted. We felt Greg Sims' knothole rings best responded to the exhibition's theme. His entry, entitled, **He loves me, she loves me...knots**, was recognized with the **METALURGE** Award. The rings, complete with inscribed pine box and carving tools, embodied a unique aspect of interactivity, inviting the couple receiving the rings to carve their own initials on the box. The Kitco Award for Innovation went to Mary McIntyre whose birch bark rings were inspired by sunny days at camp with their resultant enduring friendships.

The winning entry for the Imperial Smelting and Refining Best of Show Award is superb from all aspects: exquisite design, meticulously made, lyrical, moving and wonderful! Matthieu Cheminée incorporated in his rings textures reminiscent of African *buale* beads in combination with sweeping wave forms. The relationship of one ring to the other, although very individual, was complete.

We congratulate the award winners, the participants, as well as Carol Slavik and Ann Douglas for their hard work and inspired impetus for what should prove to be a thought-provoking exhibition.

Ken Vickerson and Don Stuart, Judges

# Imperial Smelting and Refining Best in Show Award

Matthieu Cheminée



# Matthieu Cheminée

## Artist's Statement

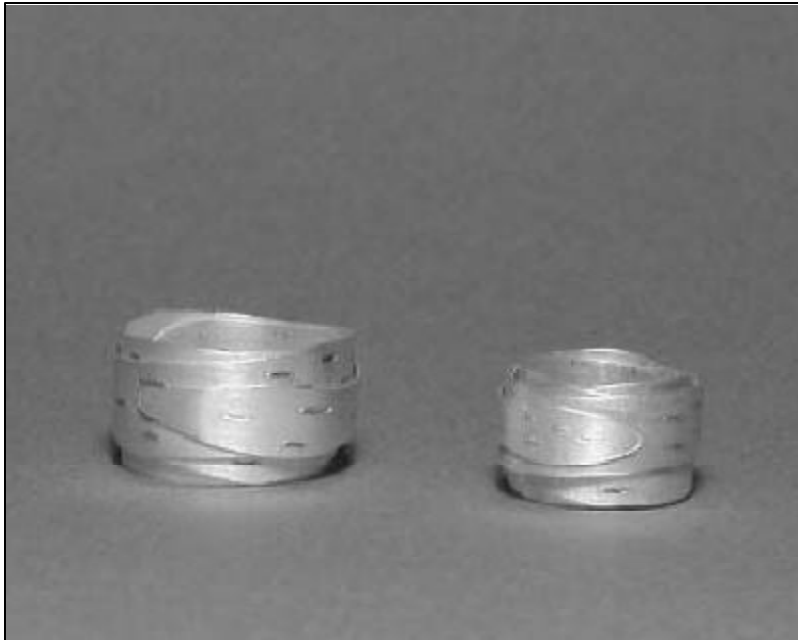
The band is a circle of perpetuity, of everlasting love and commitment. The textures that mark this ring are representing the foundation of love. However, love and life with one another are not without challenges. The wires are the image of the many paths that lead us not only through wonderful times but also, through the tumultuous waves that life can bring. These are nevertheless reinforced by the promise of better moments to come. Pink tourmaline is the reflection of the sweetness of love, as the diamond represents “forever” being the strongest matter on Earth. Whatever form our love takes, however hard it may be, the power of the union between two beings is everlasting.

## Artist's Biography

Originally from France, I moved to New Mexico at the age of 19. I fell in love with the Native American art, and especially with the Hopi, Zuni and Navajo jewelry. I then started watching and learning from native silversmiths over a period of 6 years, all the while doing photography. In 1995, I moved to Paris where I worked as a photographer for a year before moving to Mali in West Africa. There I worked for different organizations as a photographer when I met Touareg and Bambara jewelers who re-ignited my passion for jewelry. After working with them for 2 years, exchanging techniques, I then moved to Canada, where I decided to perfect my skills by going to a jewellery-making school for a period of 18 months. This experience gave me a more classical and technical view of the trade.

# Kitcko Award for Innovation

Mary McIntyre  
*Birch Bark Rings*



# Mary McIntyre

## Artist's Statement

These rings had their genesis in a Cynthia Cousens' workshop at Harbourfront's "International Creators" conference in 2002. Cousens challenged participants to explore the possibilities of the line, and to create jewels based on gestural drawings and abstract brush marks generated in the first day of the workshop.

Under this inspiration, I drew on childhood memories of summer camp and weekends in the woods, and the simple ornaments my friends and I made from flowers, grasses and the papery bark peeled from birch trees.

The beauty of the Birch Bark Rings is the simplicity of the design idea and its execution: a spiral form, found in nature, fabricated simply in a humble and accessible material.

Flexible and resilient, the work-hardened rings are easily sized and resized to allow for natural changes in the wearers' bodies over time (pregnancies and playoff seasons included). The rings are presently sized at 4.5 and 8, to fit the maker and her spouse.

The Birch Bark Rings suggest the simplicity and faith of childhood: the fragility of human relationships in the face of an unknowable future: and the flexibility and possibility for growth that distinguish any healthy loving relationship.

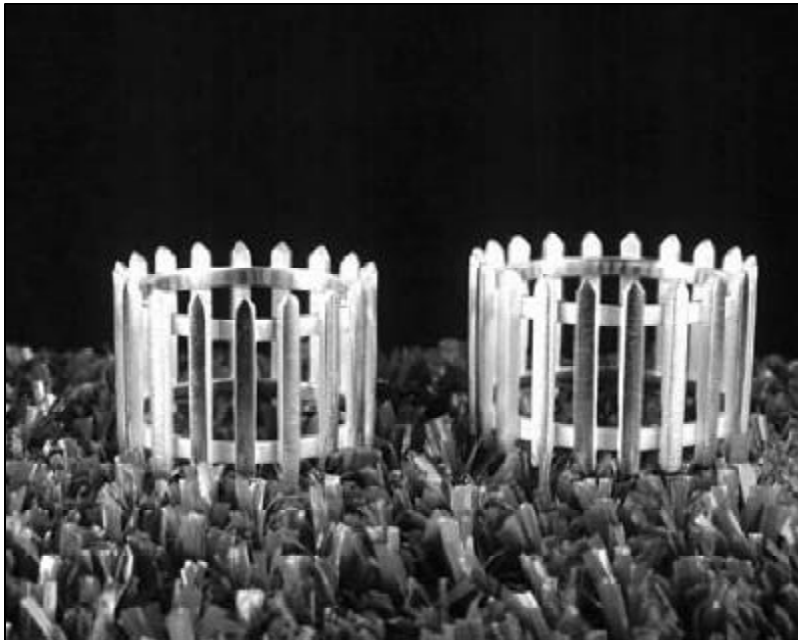
## Artist's Biography

Mary MacIntyre is a Toronto-based jeweler and metalsmith. She studied at the Ontario College of Art, and for four years at Sir Sandford Fleming College under Lois Etherington Betteridge. Mary's fascination with traditional vessel forms has led her from metal to hot glass, material that she is at present combining in a series of urns and containers. Her work recently appeared at a group show in Hamilton, Ontario, commemorating Lois Betteridge's 20 years of teaching at Sir Sandford Fleming College.

# Handy and Harman Emerging Artist Award

Sarah Troper

*Picket Fence Bands*



# Sarah Troper

## Artist's Statement

I have a desire to articulate my thoughts and ideas about the issues I find important, inspiring and even infuriating. Jewellery is my outlet and medium for expression. I have incorporated many recognizable symbols and images into my work. Through the utilization of communicative tools such as humor, irony, wit and sarcasm, and the juxtaposition of symbol and object, it is my intent to create tension and play. It is the response to the layers on meaning in my work that, for me, completes the process of making.

Picket Fence Bands celebrate the strength, merit and diversity of contemporary relationships. There is nothing that makes one lifestyle, family or relationship more wholesome, loving or deserved than another. Although we may define them differently, when it comes to love and happiness, don't we all deserve to have our white picket fence?

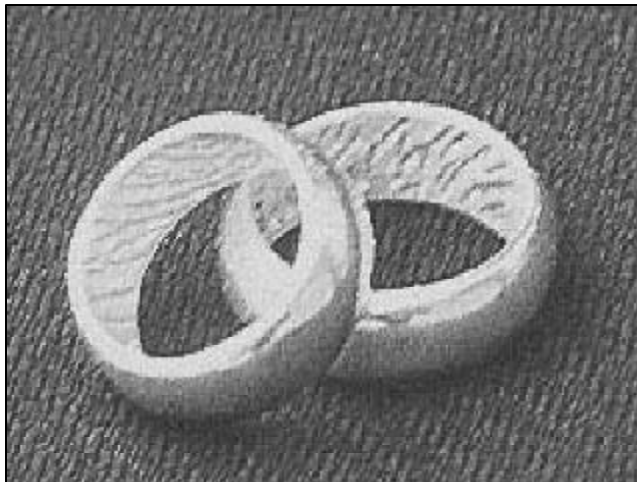
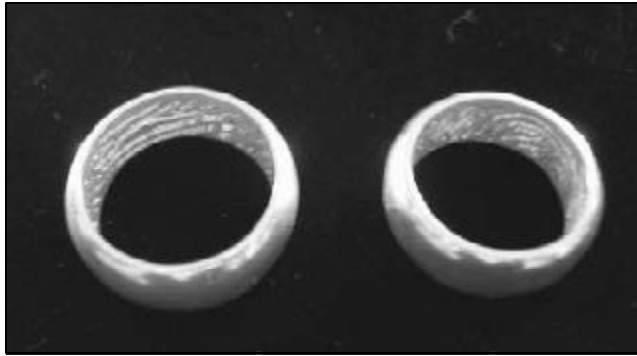
## Artist's Biography

Sarah Troper has received her Bachelor of Fine Arts with a major in Jewellery and Metalsmithing from the Nova Scotia College of Art and Design in 2000. She has worked as a studio artist in both Halifax and Toronto. Sarah is entering her third year as a resident artist in the Metal studio at Harbourfront Center in Toronto. She was the recipient of the award from best Jewellery in Show at the Toronto Outdoor Art Exhibition in both 2002 and 2003. Her work was recently included in two exhibitions at Harbourfront Center, **Same Time/Same Place** in York Quay Gallery and **Constructed** in Studio Works. Sarah's *Wholesome Wonderful War- Collar Pins* are included in the traveling **Anti-War Medals Exhibition** (Velvet da Vinci, San Francisco), currently on display at Electrum in London, England.

# Pizza Pizza Student Award

Ashley Thompson

*In Touch*



# Ashley Thompson

## Artist's Statement

Marriage and people's ideas about marriage have changed over the years but one that has remained the same, for a couple to stay together for a long time, takes a lot of work. Marriage is a very fragile thing and needs to be treated as such. I wanted my rings to remind the wearers of the impact that they are making on another person's life and the impact that is being made on theirs. While the outside of the ring appears very simple the inside will be etched with the opposite partner's fingerprint: in this way the two will always be touching.

## Artist's Biography

Ashley Thompson is a twenty-three year old student entering her thesis year at the Ontario College of Art and Design. She grew up on a farm in a tight-knit rural community in Muskoka. Her work is often influenced by nature and her close family upbringing. Ashley also has an interest in wood working. She hopes to work with and combine both mediums in her future work.

# METALURGE Award

Greg Sims

*He loves me, she loves me ... knots*



# Greg Sims

## Artist's Statement

**He loves me, she loves me....knots** is a set of wedding bands created from a single block of pine. A piece of wood is chosen where two knotholes of appropriate size have grown near each other. The knots are pushed out of the wood, carved and then cast in precious metal. The original shape and texture of the knots are maintained so that they will fit back into position. A box is fashioned out of the remaining wood and inscribed with the repeating phrase, "he loves me, she loves me..." A letter template and carving tool are provided with the box so that the couple can personalize the set by carving their initials into its outside. The piece can be used during the wedding ceremony and then as a keepsake throughout the marriage.

The complete piece becomes a symbol of the couples loving relationships and their commitment to be together. Since the pieces are cast directly, each wedding band set is entirely unique. It becomes a metaphor of a strong marriage, taking into consideration the couples shared bond but maintaining and allowing individuality. Often considered imperfections, the knots remind the couple that marriage is not always easy; that difficulties can be confronted and transformed. The act of carving the box allows the couple to participate actively in the creation of their rings and becomes a reminder of the couple's youthful and romantic professions of love.

## Artist's Biography

Greg Sims is a graduate of the Ontario College of Art and Design in Toronto. He received a Master of Arts Degree from the School of Jewellery, Birmingham Institute of Art & Design, Birmingham, United Kingdom in 2003.

Currently, Greg teaches at the Nova Scotia College of Art & Design in Halifax, Nova Scotia.

# About METALURGE

**Love, Hope, Faith: Artists Re-Image the Ring** marks the second anniversary of the opening of METALURGE's retail gallery. The seventeen artists, gathered from across the country, for this exhibition, are diverse in age, experience, interests and approaches to their work. Many are new to me and it will be the first time we show their work. This exhibition represents what was important to me two years ago and what METALURGE remains committed to: showcasing the range of work being produced by some of the most exciting metalartists in Canada today

METALURGE strives to create a warm inviting environment in which to introduce and foster an appreciation of the metalarts for those who are connoisseurs and those who are new to the craft. This goal is achieved in Greg Sim's piece "He Loves Me, She Loves Me... Knot" through the active, creative collaboration between the artist, client and the work itself. We were thrilled to present Greg with the METALURGE award.

I would like to thank my friends, family and staff who worked to make this exhibition a success. Ann Douglas has been instrumental in shepherding the process along from start to finish. Not being a metalartist I valued the informative, exacting and profes-

sional jurying by Don Stuart and Ken Vickerson. Our student intern, Susanne Vaughn, has somehow managed to remain calm and hard working through the whirlwind of exhibition activities. Richard Massey, who designed the exhibition space, has helped us keep our sense of fun and delight. Susan Wilson worked long and hard to produce METALURGE's first exhibition catalogue. The corporate partnerships, represented in the four exhibition awards, are an exciting new development and we look forward to future collaborations. Finally, I would like to acknowledge the assistance of my family and thank them for their ongoing support over the past year.

It has been an amazing two years for METALURGE. I continue to meet new artists and find exciting ways to showcase them and their work. We will continue to strive to support and nurture all aspects of the aesthetic process from artistic creation to the long-term preservation of works in metal.

However, METALURGE can only be successful through the strong and supportive partnerships with artists. I would like to thank all the fabulous artists who met the spirit and challenge set out in **Love, Hope, Faith: Artists Re-Image the Ring**.

# Gillian E. Batcher

## Artist's Statement

This set of five rings contains one male ring and four female rings. The male and female pieces fit together using the lock and key method. This union of two halves is symbolic of the union in marriage.

The reason for the multiple female rings can be interpreted in a variety of ways. One reason might be for fashion. Having four choices for a wedding ring would allow the wearer to change her jewellery while still wearing her wedding ring. Another analysis is for the more cynical perceptions of marriage and divorce in today's culture. The four rings are disposable in the way that many treat marriage. Finally, this set of five rings might suit cultures where men can marry multiple wives. The fact that the female rings all fit the male ring gives a sense of unity to a family adopting multiple marriages to the same man.

## Artist's Biography

Gillian E. Batcher works in Toronto in the Metal Studio at Harbourfront Centre. She has a degree in Psychology, with distinction, from the University of Western Ontario. During her undergraduate studies she participated in two exchanges, one to the University of Toronto and the other to Melbourne University, Australia. After completing these studies she went to George Brown College and completed the three-year Jewellery Arts program, graduating with distinction. In addition to these studies she took an intensive jewellery course in Florence, Italy.

Gillian's work is greatly influenced by her experiences of travel. These influences become evident in the many bodies of seemingly different work she produces, with the unifying themes of colour and movement. These themes are explored in a variety of ways. Colour is explored through metal, stones and alternative materials, while movement is explored as both a visual and a physical concept.



# Klay Covert

## Artist's Statement

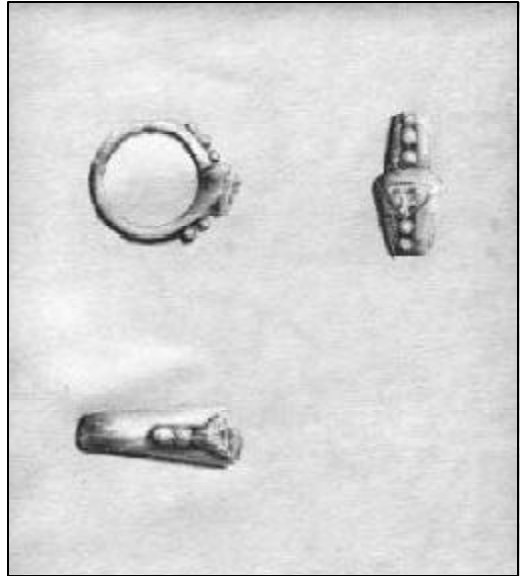
Colours, as well as relationships, can make you feel good, can make you feel bad, or glad; and there are plenty more emotions that fit in to our lives. Rings and relationships need more colour, and why shouldn't a wedding band be colourful? The colours are symbolic of the playfulness, the joy and the sensual overload of a relationship that has realized a marriage bond. The gems are intended to evoke a happy sense in the viewer, and to allow the wearer to share his/her love and passion with everyone who gazes at the ring.



## Artist's Biography

Klay is a recent graduate of the Georgian College Jewellery and Metals program and is returning in the fall to take the Post-Graduate Goldsmithing program. He was a scholarship winner in the Georgian College SDVA show this past May, winning three awards. He is currently residing in Huntsville, to continue his goldsmithing education throughout the summer.

# The Colours of Love



# Karin Domnick

# Baucis and Philemon

## Artist's Statement

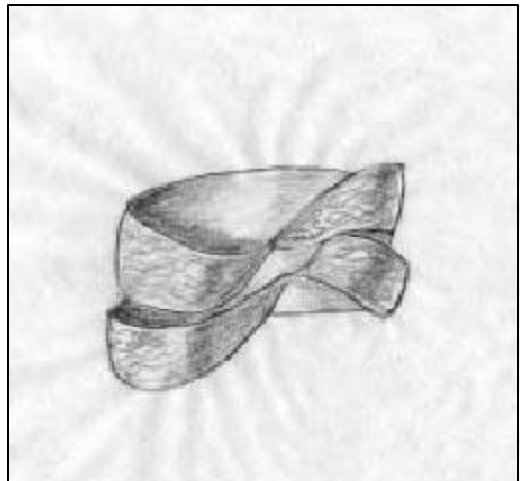
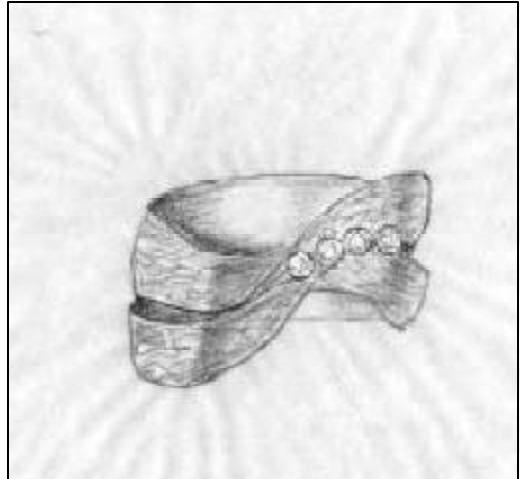
This pair of wedding rings is inspired by an ancient love story told by Ovid about a couple who wished never to be parted. One day, while sitting on a bench and reminiscing about their long life together, they were transformed into a single tree. This tree, from which two types of leaves sprouted – linden and oak, was the gods' gift to a devoted and faithful couple.

The interdependence of two people in marriage is expressed by both the design and treatment of materials in these rings. Two colours of gold are used to create the two *mokume gane* mobius strips which merge into a single band.



## Artist's Biography

Karin Domnick is an aspiring three-dimensional artist, who is very slowly completing a program in Jewellery/Silversmithing at Ontario College of Art and Design. She enjoys creating conceptual, one-of-a-kind pieces. She is also an active volunteer in the theatre community.



# Shoshana Farber

## The Tie That Binds

### Artist's Statement

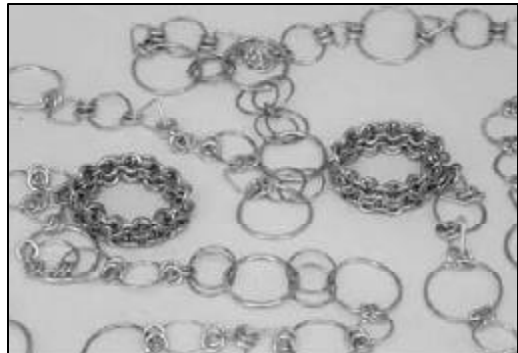
**The Tie That Binds** is a pair of connected chainmail wedding bands constructed in sterling silver and 14 karat gold. It refers to the commitment of role equality and merging of identities that occurs upon marriage. Each chain link is individually hand-formed, soldered, and assembled according to traditional "4-1" pattern. The chain alternates between single and double links to symbolize the union of two individuals into one entity.

The rings are identical, equal and absent of references to gender or status. The chainmail construction of the rings lends them both flexibility and strength. The connective chain can be worn during the ceremony to demonstrate the couple's commitment, and to incorporate the ancient ritual of "handfastening" into the wedding. It detaches for functional use.



### Artist's Biography

In 2003 Shoshana completed a diploma in Jewellery Design from the Kootenay School of Arts in British Columbia. She recently returned to Toronto to design and make contemporary jewellery under the name Showsh Designs.



# Mary Frances Jung

## Grass Betrothal Rings

### Artist's Statement

In my work, I have experimented and explored various elements found in nature. The simplicity and beauty of a simple blade of grass is one element that has challenged and inspired me. The motif of blades of grass is ideal for the symbol of the promise of love. It is my aim to create motifs from nature that may not really exist, as if you took a real blade of grass and toyed with it. My creation is this form, immortalized into precious metal. The natural element captures the spirit of the promise. Nature improbable is transformed into the possible; into adornment, a genuine symbol of love and internal promise.

There are two versions of the Grass Betrothal Rings. The man's ring is a two-bladed band. For women, there is a three-banded, bladed band that resembles the man's, or a twobladed band with berries and a vine.



### Artist's Biography

Mary Frances Jung is a Jewellery student at the Ontario College of Art and Design. She is inspired to create through observing nature, then transforming the images into jewellery pieces. It is her aim to create motifs from nature that may not really exist; forms immortalized into precious metal.



# Lucie Lambert

## Artist's Statement

As a printmaker in drawings and in etchings, I am interested in pure geometry and especially in triangles. Only recently have I been able to translate this pure form into jewellery.

The process started when, as a student, a project of solid geometry was presented to me as an assignment. Since then I have made three rings, modified as I have experienced wearing them. Much as I like the triangular ring with the three garnets for its absolute integrity, it is uncomfortable to wear, for instance while driving my car. As it has evolved, the truncated triangular ring offers solution to this practical concern.

Reflecting on the subject, I realize that jewellery can be autonomous, unwearable art, seen as sculpture or as object. The extraordinary Dutch jeweller Emmy van Leersum speaks of "objects to wear" and perhaps this is where these rings may fit the canon. The triangle in terms of the theme presented could refer to *le mariage à trois*, but virtues instead are offered as a source of inspiration: Love, Hope, Faith. In my rings, the theme of love is expressed in the shape of a heart seen through the cylinder, the passageway for the finger. I find the triangle very satisfying visually, sharp and balanced - a symbol of sexuality.

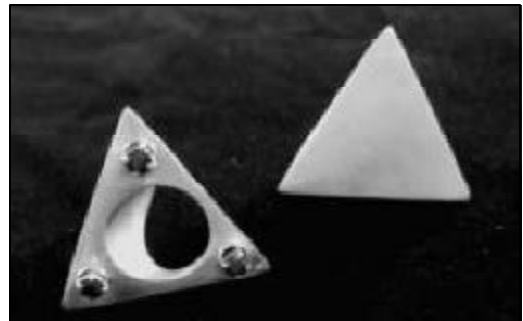


# Two Traingular Rings

## Artist's Biography

Printmaking is the technical discipline to which I have devoted the most time and study. My artistic commitment, however, has not been limited to a single medium of expression. Sculpture, jewelrmaking, ceramics, and tempera have also taught me how to capture the elementary rhythms of fire and water, the slower movements of clouds and trees, the organic forms of animal life. Especially through the modeling of clay, I have begun to understand the mysterious drama played by the human body. Perhaps I might have remained a stranger to the unending metamorphosis of the creative act without the guidance and constant practice of Chinese calligraphy, through which, day by day, I feel unraveling within me the secret of some hidden harmony.

To be an artist, for me, is to find in inanimate matter the unknown tenderness that manifests itself - as fire casts light into the darkness of night, as life is given to surmount death.



# Ron Maunder

# Evergreen, Continuity of Life

## Artist's Statement

### Wedding Vows

#### Evergreen, Continuity of Life

Nature provides the most beautiful texture. These wedding rings are cast in 14 karat gold. The texture is from the stem of a Spruce tree; an Evergreen seed planted in May 2003 and grown into a sapling. Aside from the beautiful texture, Spruce, like other Evergreens, represents continuous life.

### Strength in Marriage

Diamond represents strength. Diamond is possibly the most appropriate gemstone to represent the strength in a life long commitment between two people. **Note:** I have used Cubic Zirconias in these rings.

### Commitment & Loyalty

Rings with Sapphires - Sapphire is said to "express commitment and loyalty of the heart". Two Sapphires are placed on either side of the center stone.

Rings with Tsavorites - Garnet, according to legend, is said to "promote long-lasting love". Tsavorite is a more rare form of garnet. With its distinct luscious green colour it is also known as the "African Emerald".

### The Future

Space is available, beside each garnet, for the placement of future birthstones.

## Artist's Biography

My background is in the study of the environment (a degree in zoology and botany). Like a magnet to steel, I seek out the natural textures of plants. For this piece I took a stem from the Blue Spruce tree, planted by the grandmother of my wife, Tracy 35 years ago. The work that I produce is meant to be unique while at the same time I seek to celebrate the lore of the traditional by making connections to the past and the beauty of environment that surrounds us.

My company is called *Inspired Naturally: Artistic Jewelry Design*.



# Shona Rae

## Artist's Statement

My fascination with religion, myth, fairytales and folklore is a major influence in my creative work.

The Greek myth of "Eros and Psyche" describes a marriage where love is present. Yet true emotional growth is needed for this love to survive the rigors of partnership. Eros holds the bow and arrow that symbolizes the initial prick of true love. He demands that his young wife must promise to never look upon him. Yet this promise is broken when Psyche holds up the lamp to see her husband, an action indicating her willingness to understand him for whom he truly is. The dagger that she holds represents the emotional tools she will need to develop so she can unite with her husband on a deeper level. The marriage seems to be ended but faith in true love remains, and through a series of tasks Psyche redeems herself to her true love, Eros, and they live happily ever after.



# The Lovers

## Artist's Biography

Shona Rae was a professional clay sculptor for nearly a decade before a series of dreams led her to begin studying goldsmithing and the metal arts in 1994. She received her diploma from the Kootenay School of the Arts Cooperative in 1988. Shona received her Bachelor of Fine Arts with distinction in 2000 from the Alberta College of Art and Design. After nearly thirty years as a ceramicist, she has discovered that metal is clay, and she is enthusiastically applying that knowledge to her creative works.

Shona maintains a professional art and jewellery design practice, teaches part time at the Alberta College of Art and Design and is in process of opening "influx" art jewellery gallery in downtown Calgary. She has won numerous awards and attention for her sculpture art jewellery in Europe and North America. Shona Rae maintains a deep commitment to the study and creation of art, craft and design.



# Cynthia Ryder

## Artist's Statement

My rings have taken on the obvious nature of the classic couple's wedding bands. They are made from sterling silver and 14 karat gold-fill wire and are woven.

The two colours in the bands represent the two lives being joined in the rite of marriage; the weave is the blending of the lives. The twists and turns in the rings are symbolic of the many forms in life. With each turn the alternate wire is there to support the structure of the ring, much as the partners have promised, in good faith, to support each other in weaving together the fabric of their new life as one.



## Artist's Biography

Cynthia Ryder (BA '90 STU) has been an artisan since 1992, when she began working with stained glass. By 1996 it had evolved into a wholesale business that incorporated pewter with stained glass. Within a few months the pewter designing and casting work had lead to jewelry crafting. Cynthia left wholesaling in 2001 in order to get back to handcrafting and to rediscover her creative side. This change in direction lead to work with polymer clay, lampworking and wire. in 2001. With an interest in the structure and creation of wire jewellery piqued, she began work in 2002-2003, which quickly evolved into precious metal constructs incorporating precious and semi-precious stones. More recently, an interest in textile techniques in wire has evolved.

*...and now for something completely different...* jewellery was born in January 2003.

Juried member of the Nova Scotia Metal Arts Guild, and of the Dartmouth Handcrafters' Guild



## Erin Tracey

### Artist's Statement

It is easy to get caught up in the stress and chaos of everyday life while forgetting the real purpose of our lives. It seems that during this chaos, we often forget to nurture the important connection between our chosen partner and ourselves.

Inspired by the simplicity of Zen Buddhist philosophies, these rings signify the garden path of a Japanese teahouse. The purpose of the garden path is to break connection with the outside world in order to enter a truer state of consciousness.

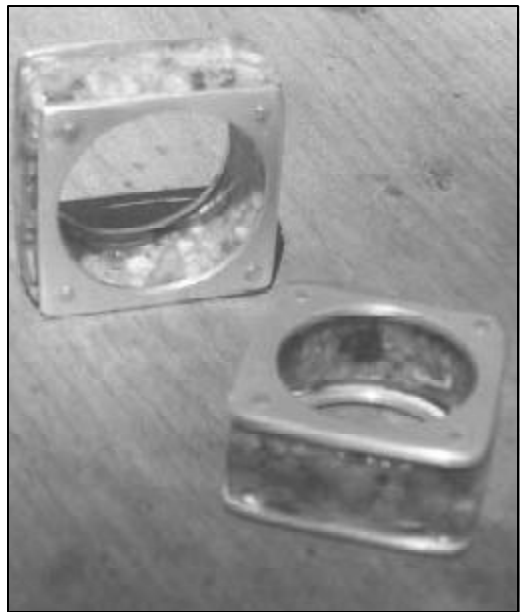
These rings act as that reminder of the true purpose of life and the sacredness of the connection between the individuals. The philosophy behind these rings allows the wearers the simple freedom to embrace and nurture their relationship, and continuously remember why they are together without the conflicts and the stress of everyday life.

“Those who journey down this garden path rejoice at how their spirit, as they walk over the irregularities of the stepping stones, become uplifted above ordinary thoughts, and leave the chaos of the world behind”.

## Roji

### Artist's Biography

Erin Tracy is an award-winning graduate from the jewellery and metalsmithing program at the Ontario College of Art and Design, graduating in June 2004 with her Bachelor of Design. In the last year Erin's work has been in numerous exhibitions and is currently available in many retail locations. Her company, entitled Erin Tracy Designs, was launched in September 2003 and has seen continued success and growth.



# Annette VanLeeuwen

## Artist's Statement

I love how copper and sterling silver look when combined in a piece of jewellery. Placed side by side, the two metals complement each other while also emphasizing their contrasting natures. In committing to each other, two individuals with distinctive personalities and characteristics make the pledge to support, love and complement each other.

My rings represent that ultimate symbol of love, devotion and commitment. The two metals, like two people, combine to make a single unit; the loose twists in the copper are the ties that bind us to our loved one, without being constrictive; the slight variation in design gives the opportunity for choice based on individual preference while still "matching".



## Artist's Biography

Annette comes to her jewellery making with a Bachelor of Fine Arts in painting and sculpture, a Bachelor of Education, and a three-year Goldsmithing diploma from George Brown College. She spent two years as a resident in the Craft Studios at Harbourfront Centre developing her unique style of jewellery. Since June 1999, Annette has been working as an independent studio jeweller, designing and making her own jewellery lines, and as an instructor of Jewellery Design and Rendering at George Brown College.

Working as a Jeweller has given Annette direction as an artist, which she never felt as a painter and sculptor. In limiting the framework of her artistic expression to the requirements of designing earrings, necklaces, bracelets and brooches, Annette has discovered the freedom to explore the limitless possibilities open to her. In all her designs she strives for a balance between wearability, beauty, originality, simplicity and good design. The ideas, inspiration and actual pieces are only limited by the number of waking hours in a day.



# Andrea Wenckebach

## Artist's Statement

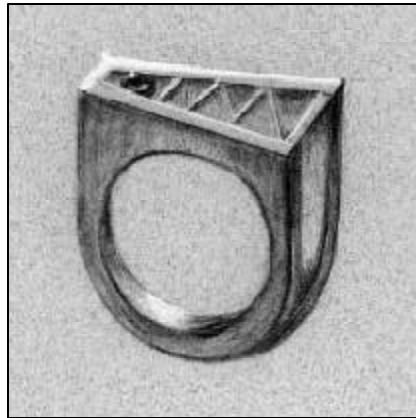
Many traditional wedding/commitment rings are made as a matching pair, often incorporating diamonds. The idea behind the rings I have created is that each person in a union brings their own traits, personality and ideas to the relationship. People often pick partners who have traits that are opposite to theirs. Therefore, I have chosen to create two different rings that have some things in common: the flowing lines of one ring contrast with the rigidity of the other. One ring is white gold with yellow gold accents and the other is yellow gold with white gold accents. I have combined both colours of gold in each ring to symbolize the union between two people.

I have chosen to use sapphires, not the traditional diamonds, as sapphires have, for centuries, symbolized love, loyalty, and hope. Some even claim that sapphires end strife between two lovers.



## Artist's Biography

Andrea graduated from York University in 1992, with an Honours Bachelor of Arts in Anthropology. The year she graduated, she decided to take a workshop in jewellery at the Harbourfront Centre in Toronto, where she discovered her real passion was making jewellery. With this newfound passion, she launched her new career. In 1998, after several years of making jewellery on her own, she applied to Georgian College to take the Jewellery and Metals course. She graduated from the third year Goldsmithing program with Honours in June 2001. Andrea's work appears at various galleries around Ontario and she has also done various corporate and private commissions. Apart from her studio work, Andrea teaches parttime at Georgian College in the Jewellery and Metals program, and does occasional jewellery workshops for the ROM. Andrea has lived in various cities across Canada, but currently makes her home in Barrie with her husband, Bruce.



# Acknowledgements

To the friends and associates whose efforts made this exhibition possible:

Alloy

Mark Brose

Ann Douglas

David Douglas

Elaine Goldy

Mary Hemphill

Richard Massey

Paul McClure

Ann Molson

Simon Rossiter

Brooke Slavik

Jerry Slavik

Mary Slavik

Steve Slavik

Steven Slavik

Wesley Slavik

Katherine Smith & Byte Size Media

Don Stuart

Phil Ubanski

Suzanne Vaughan

Ken Vickerson

Susan Wilson



Printer: Minuteman Press

© 2004

# Sponsors

Created in 1867, as a trader of precious metals, Handy & Harman today is a widely diversified manufacturing company, fabricating thou-

sands of kinds of products for a broad spectrum of industrial users. The Precious Metals Fabrication Group produces metal brazing alloys and silver products including sterling silver and silver alloy wire and strip.



Imperial Smelting & Refining Co. of Canada Ltd. is the only privately owned, full service, primary precious metals manufacturer and refiner in Canada. Founded in 1914 by Sydney Bromwich, his descendants are still actively involved with the company. This tradition of family working together has perpetuated the Imperial family which now encompasses over 85 employees and hundreds of customers and suppliers throughout Canada and the US. Imperial Smelting & Refining offers refining services, custom and stock products for the jewellery industry, goldsmiths, and all users of precious metals.



## KITCO

Since 1977, Kitco has earned a reputation as one of the world's premier retailers of precious metals. Kitco offers a complete line of the highest quality bullion bars and coins for investors and refining services for the jewelry manufacturing industry. Kitco serves the needs of both small and large investors, as well as the precious metals industry. Kitco is a leader in the precious metals industry, by providing the jewelry industry with a full range of refining services. Having the capacity to process large as well as small refining lots Kitco can refine karat scrap, polishing, floor sweeps, grinding, filings or anything else containing gold, silver, platinum or palladium.

Ontario's #1 Pizza - a leader and innovator in the fast food industry since 1967. Throughout our history, our commitment to quality, freshness, service excellence, customer satisfaction, and innovation has been the driving force behind Pizza Pizza. We offer the freedom to be your own boss under the umbrella of the most recognized and respected pizza



company in Ontario and the opportunity to achieve financial stability and build equity for you and your family. We provide Comprehensive Training, Operational Support, Extensive Marketing & Advertising, State-of-the-Art Supply Warehouse, Cutting Edge Technology, Location & Design. We are moving into the future with a continued promise of excellence, a pledge to community involvement, and an ongoing responsible approach to the environment. We have built a sense of pride within our organization that reflects in the respectful relationships at all levels. We are a growing franchise with a total of 488 locations including 338 traditional restaurants and 150 non-traditional restaurants. For more information contact Franchise Sales at 1-800-263-5556 or visit our website [www.pizzapizza.ca](http://www.pizzapizza.ca).